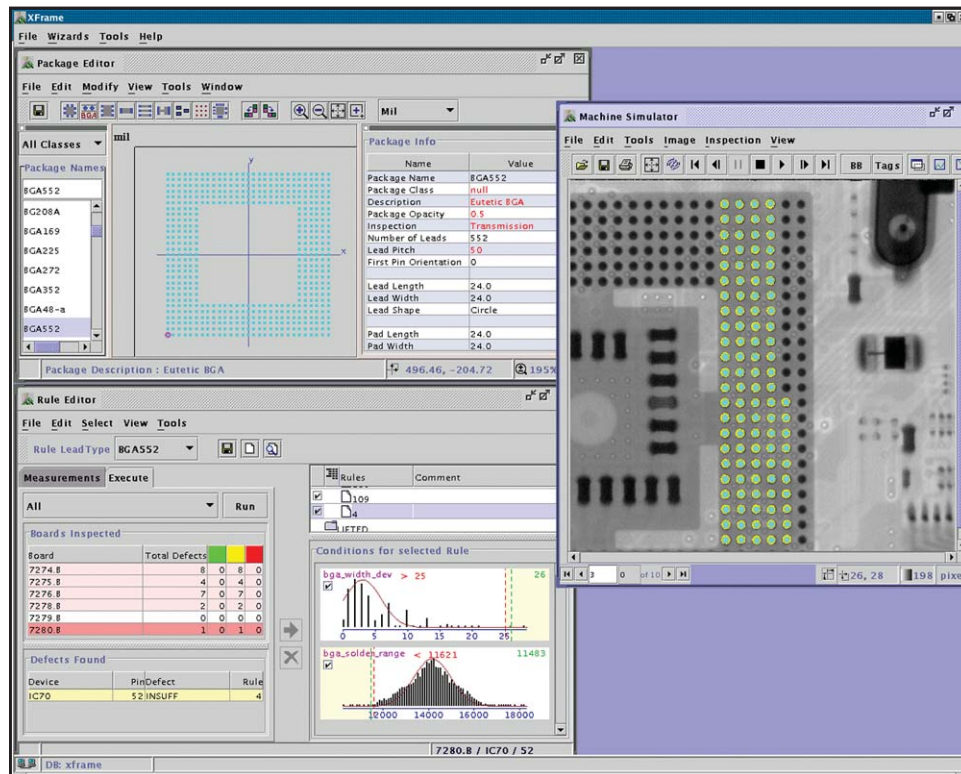


XFrame™

Integrated Software Development Environment for XStation HS™ Automated X-Ray Inspection Systems

- *Fastest program development via built-in inspection wizards*
- *Uses Teradyne's D2B™ and Alchemist™ software for performing CAD preparation activities*
- *Automated generation of measurement windows and thresholds*
- *Easy-to-use PC-based system supports popular Red Hat Linux operating system*
- *Consistent program quality with the use of an Oracle database*
- *Comprehensive online help and electronic manuals*
- *Teradyne world-wide service and support*



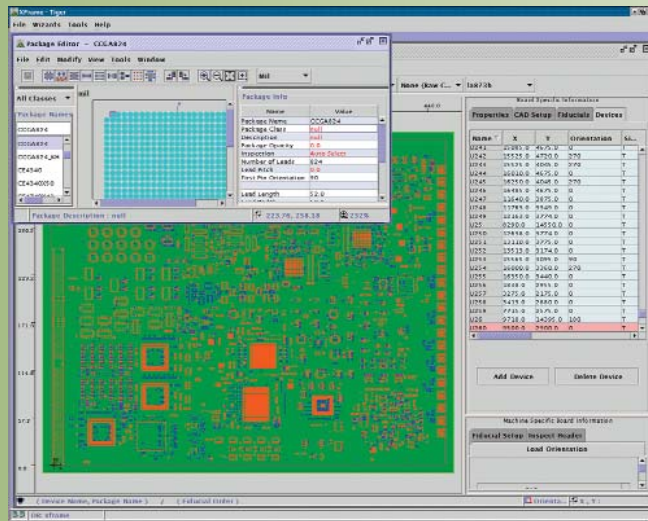
The XFrame integrated development environment speeds your time to market by streamlining all stages of AXI program development and deployment, from preparation of CAD files through off-line debug through verified fault detection.

The XFrame Integrated Program Development Environment significantly reduces program-generation time and improves the consistency and quality of AXI inspection programs for the XStation AXI system. The PC-based XFrame software allows all programming to be performed off-line, enabling maximum utilization of investment in equipment. Unlike other AXI programming software, XFrame provides complete flexibility by giving the customer the ability to set thresholds rather than hard-coding them into the software. XFrame deploys a new graphical user interface and ensures data quality using an industry-standard Oracle database.

Built-in Inspection Wizards for Fastest Program Development

With the use of an intuitive graphical user interface and program development wizards, the user is guided through the steps to develop inspection programs quickly and easily.

- The **New Program Wizard** guides the user through general new program information such as program name and data directories.
- The **Import CAD Data Wizard** guides the user in selecting the device file and comparing the device information to the device data stored in the database.
- The **Compile Inspection Wizard** guides the user through automatic compilation of the inspection program.



The Import CAD Data Wizard has completed, and the inspection program is ready to be transferred to the XStation HS system.

- The **Transfer Inspection Program Wizard** guides the user through the automatic transfer of the inspection program to one or more machines. It also features the ability to automatically generate threshold files for the program.
- The **Collect Inspection Results Wizard** guides the user through collecting program information from the XStation. This program information includes data and images used for debugging and tuning the program offline.
- The **Machine Simulator Tool** allows all the tuning and debug to be done offline.
- The **Parameter and Rule Editors** provide the user with automatic generation of parameters and rules.

Built-in Machine Simulator Software Allows Off-line Program Debug

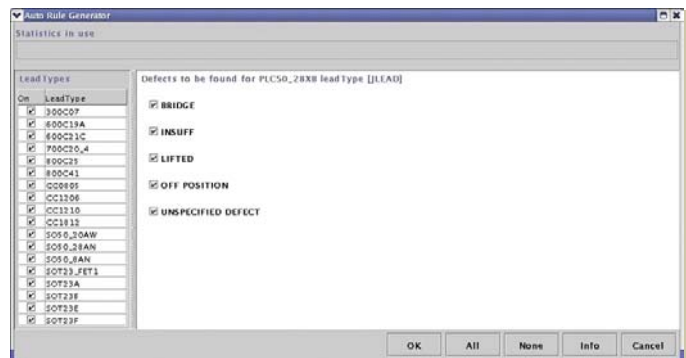
Teradyne uses patented* X-ray inspection techniques to capture images with the highest quality and highest resolution. Once a set of images is acquired, built-in machine simulator software enables you to perform all inspection-program debug activities on an off-line development PC. By performing program debug off-line rather than tying up the AXI system, you maximize the utilization of your XStation HS AXI system.

Perform CAD Preparation Tasks with Teradyne's D2B™ and Alchemist™ Software

The XFrame environment is designed to use Teradyne's D2B and Alchemist products for CAD preparation tasks. Alchemist is simple to learn and provides CAD translators for 29 different CAD design systems, as well as GenCAD and GenCAM.

Automated Generation of Measurement Windows and Thresholds

Unlike other AXI programming software, XFrame provides complete flexibility by giving the customer the ability to set thresholds rather than hard-coding them into the software. XFrame software automatically generates parameter file information



When a user chooses to automatically generate rules, all available devices in the program are displayed with a list of available defects that can be detected. By selecting the defects, the rule generator will automatically set thresholds for rules to detect the selected defects.

based on the devices in the program. These parameters include auto-sized windows based on lead sizes and default thresholds. The automatic rule generator will generate a rule file based on multiple data files for multiple defect levels.

Easy-to-use PC/Red Hat Linux Development System

The XFrame software operates on an Intel-based PC using the Red Hat Linux operating system. XFrame provides a graphical user interface for developing and deploying inspection applications for Teradyne XStation HS systems.

Consistent Program Quality with the use of an Oracle Database

XFrame employs an Oracle database to store and manage program data, which helps ensure consistent, fault-free data and consistent program quality. Centralized data management is used for all inspection program data from the CAD and package libraries to inspection thresholds. The database is easily accessible to multiple users with a user login name and password.

On-line Help System

XFrame provides the user with a detailed on-line help system, including electronic manuals, to shorten the learning curve and speed the program development process.

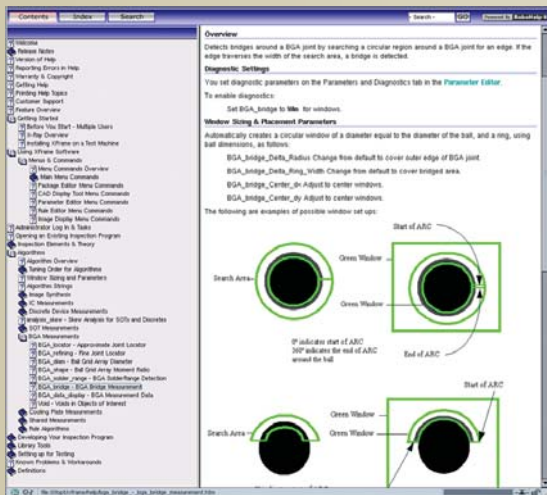
Teradyne's Worldwide Service and Support

A dedicated, worldwide network of customer service and support professionals supports every Teradyne product. Teradyne provides regional support and training centers around the world. A full spectrum of services and software support programs also extend beyond the expiration of your original warranty.

New to our service and support area is the eKnowledge portal, this portal gives customers detailed, practical technical information to support the operation and maintenance of their Teradyne test and inspection systems and software. With access to the self-service Web-based portal, you can download the latest software, find and read the latest release notes and user manuals, and submit technical questions to our expansive team of experts. Logging into the eKnowledge portal gives you access to a world of information instantly day or night, anywhere in the world. To find out more about eKnowledge please point your browser to the customer support section at: www.teradyne.com/cbti

To stay informed about the latest technological developments at Teradyne, sign up for our e-newsletters in the quick link section at: www.teradyne.com/cbti

*Patents: 4,809,308, RE35,423, EP 0236 001 and 5,541,856



The XFrame on-line help system is shown on the left. In this example, the Inspection Program Development Steps are selected. By clicking on the green colored text, the user can view the help files for that step in the process.



Because Technology Never Stops

Teradyne, Inc.
Assembly Test Division
600 Riverpark Drive
North Reading, MA 01864 U.S.A.
+1.978.370.2700

www.teradyne.com/cbti

XFrame, XStation HS, D2B, and Alchemist are all trademarks of Teradyne, Inc.
All other brand and product names are trademarks or registered trademarks of their respective owners. Information contained in this document is summary in nature and subject to change without notice. Appearance of the final, delivered product may vary from the photographs shown herein.

© Teradyne 2003 • All rights reserved •

AT-160-1103