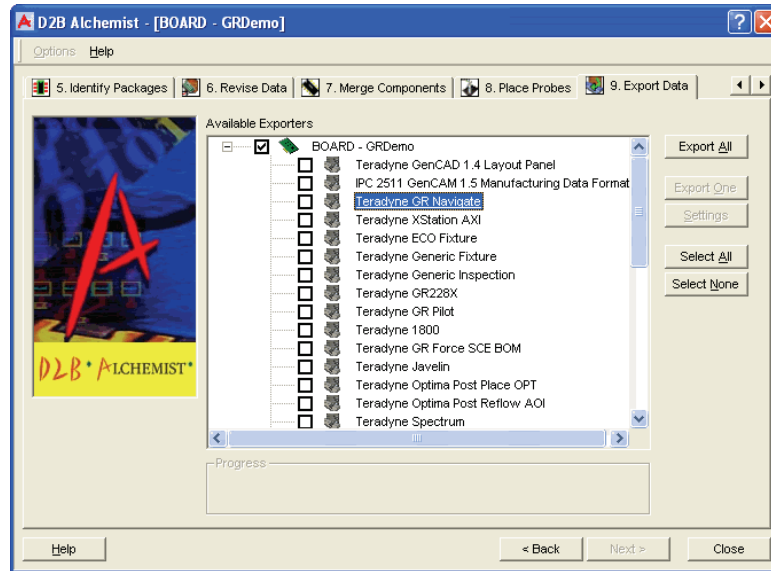


D2B Alchemist™

Increases Efficiency of Test and Inspection Program Preparation and CAD Translation

Key Features:

- Single point solution for managing design data necessary for all popular test and inspection platforms
- Reduces test and inspection program development time with a single integrated environment
- Simplifies data preparation and data correction using software wizards
- Implements practical and customizable probe placement rules for maximizing use of test points and pads
- Automatically increases fixture accuracy and reliability by generating fixture wiring files



D2B Alchemist accepts data from different formats and generates programs for Teradyne and non-Teradyne test and inspection equipment

In today's world of electronics manufacturing there is ever increasing pressure to shorten time-to-market, increase quality and reduce cost. Teradyne's D2B Alchemist™ software improves a company's ability to succeed in this increasingly competitive environment by accurately generating all of the information required to execute the increasingly complex manufacturing test, inspection and repair processes that are required by today's electronics manufacturers. D2B Alchemist software is the industry-leading test and inspection data preparation solution, capable of translating the most commonly used computer aided design (CAD) formats. The software imports PCB CAD, bill-of-material (BOM) information and part libraries, eliminating costly and error prone manual data manipulations. D2B Alchemist modifies the data according to user-specified rules and automatically assigns probe locations for in-circuit and flying probe testers.

Teradyne's D2B Alchemist software is a powerful, manufacturing-wide platform for all test and inspection data preparation. Users will

benefit from a significant increase in performance in CAD translation while reducing the time required to speed new products into manufacturing. The full function board and schematic viewer can display component, signal, test pin and property information. Intelligent label matching features enable simultaneous viewing of selected information in both board and schematic views. These features provide test developers and repair operators the power to rapidly locate failing components.

D2B Alchemist software is flexible, providing support to both GenCAM™ and ODB++ formats. The probe placement solution analyzes the printed circuit board design for in-circuit or flying probe test access and automatically assigns test probes to board nets. New features for test pin locations give users the ability to accept names and locations generated by the source CAD system. Feedback on additional probe requirements will be given to ensure complete coverage. Additionally, any component, pad or via can be marked as a non-probe location or as a forced test pin location, giving the user tremendous flexibility.

For flying probe systems, test pin placements can be automatically nudged away from the center of the pad. Properties for every test pin show the nearest adjacent pin, its distance from the current pin and the net associated with it. This information is then used to generate more accurate electrical shorts tests. The probing solution performs a complete geometrical analysis of the board and takes into account board solder mask information and body outline data to quickly produce high quality probing solutions. The speed of the probe placement program gives the user the ability to run many test scenarios in a very short time.

Teradyne's D2B Alchemist software is unique - a single mouse-click allows the user to generate programs for all test and inspection equipment on the production line. D2B Alchemist is a multi-vendor solution and can generate test and inspection program files for a variety of manufacturing equipment including:

- Teradyne TestStation™
- Teradyne XStation™
- Teradyne Spectrum™
- Teradyne Z1800™
- Takaya
- Seica
- Agilent
- MVP
- JET
- Testronics
- TRI
- IFR Macroni

Please contact your local sales office for a list of machines supported by D2B Alchemist.

D2B Alchemist software is a module of Teradyne's D2B™ suite of software solutions that enable electronic manufacturers to accelerate designs into manufacturing, and out to market faster than any design-to-build software solution in the marketplace today.

Teradyne's Worldwide Network of Service and Support

A dedicated, worldwide network of customer service and support professionals stand behind every Teradyne product. With regional support and training centers located around the world, Teradyne offers local support and continuous training for all its customers.

For More Information

For more information on our Design-to-Build suite of software solutions, please go to www.teradyne.com.



D2B's Modular Framework



Teradyne, Inc.
Systems Test Group
700 Riverpark Drive
North Reading, MA 01864 U.S.A.
+1.978.370.2700

TestStation, Spectrum, D2B, and D2B Alchemist are trademarks of Teradyne, Inc. All other brand and product names are trademarks or registered trademarks of their respective owners. Information contained in this document is summary in nature and subject to change without notice. Appearance of the final, delivered product may vary from the photographs shown herein.

© Teradyne 2010—All rights reserved,

www.teradyne.com/atd

STG-D2B-A3-2010-00