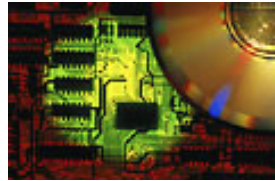




TERADYNE






Teradyne Long Stroke Receiver Probe

BECAUSE TESTING MATTERS

Agenda

- TestStation Fixture Kit Overview
 - How tester supports different fixture sizes
- Fixture construction challenges for large test fixtures
 - Bi-level interface plate required
 - Increases fixture cost and build time of wireless fixtures
- New long stroke interface probe option
 - Probe specification
- Benefits of using long stroke probe

TestStation Model Comparison

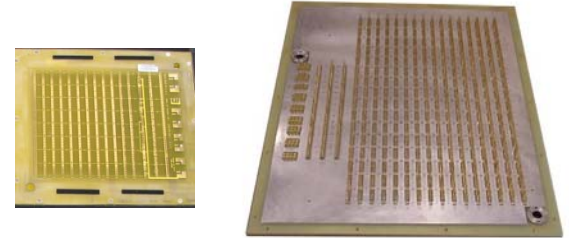
Feature	TestStation LH 	TestStation 	TestStation LX 
Max Pin Capacity	2048 / 4096	3840	7680
Maximum Pin Boards	16	30	30
Supported Pin Board Types	Ultra II 121, 121a, 124, 128L Ultra 128, 124L	Ultra II 121, 121a, 124 Ultra 128	Ultra II 128L, 124 Ultra124L
Real Pin Count Range	256 to 2048	480 to 3840	960 to 1920
Supported Fixture Types	Small, Half-Size, LH	Small, Half-Size, and Standard	Small, Half-Size, LH, Standard, and Large
Clock/Sync/Trigger Pins	Optional	Standard	Standard
Backdrive Control	Optional	Standard	Standard
FrameScan Technology	Optional	Optional	Optional
SafeTest Technology	Yes	Yes	Yes
GR 8X Compatible	Yes, Small or Half-Size fixture types	Yes, all fixtures except Large	Yes

Fixture Kit types for TestStation Platform

- Suite of fixture kits

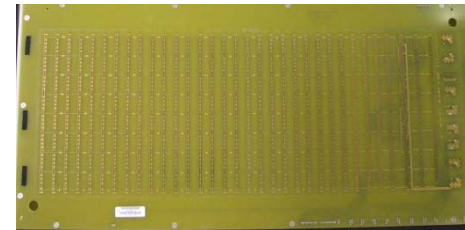
- Interface available on the TestStation LH

- 1408 pin (14 total boards, 11 pinboard)
- 1920 pin (18 total boards, 15 pinboard)
- 2048 pin (19 total boards, 16 pinboard)
- 4096 pin (19 total boards, 16 L pinboards)



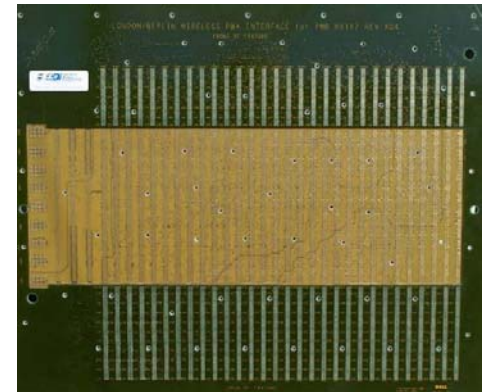
- Interface available on the TestStation

- 1408 pin (14 total boards, 11 pinboard)
- 1920 pin (18 total boards, 15 pinboard)
- 2048 pin (19 total boards, 16 pinboard)
- 3840 pin (33 total boards, 30 pinboards)



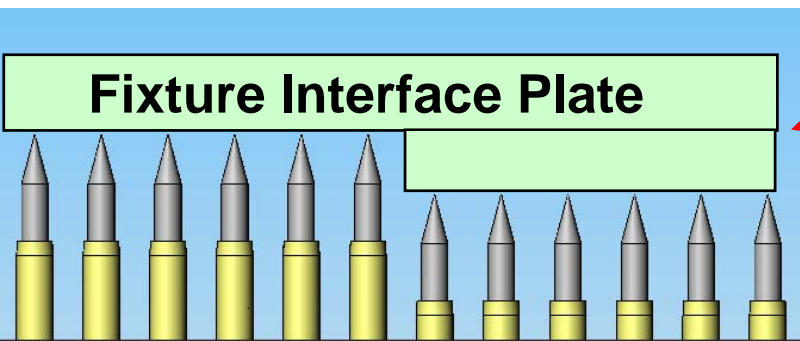
- Interfaces available on the TestStation LX

- 1408 pin (14 total boards, 11 pinboard)
- 1920 pin (18 total boards, 15 pinboard)
- 2048 pin (19 total boards, 16 pinboard)
- 3840 pin (33 total boards, 30 pinboards)
- 7680 pin (33 total boards, 30 L pinboards)



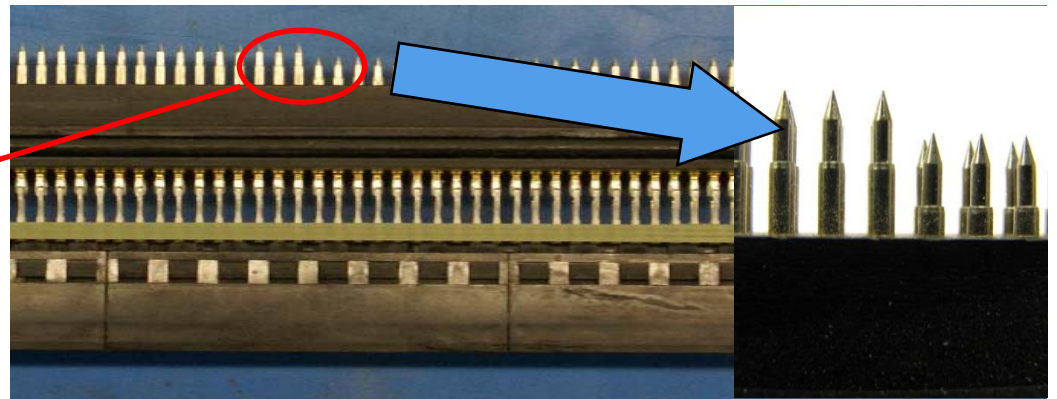
TestStation LH/LX – Original Configuration

- Zif and Receiver Probe Designed to Allow Compatibility with all Teradyne Fixture & Adapter Offerings
 - Original dual height design increases fixture cost and complexity for large wired and wireless LH/LX fixture kits (requires dual-height base plate)



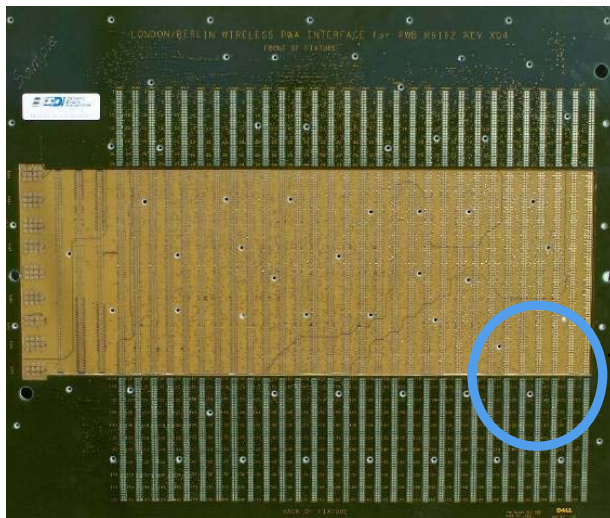
Original probe configuration

With fixture interface



Goal of New Long Stroke Probe Interface

- For TestStation LH and LX fixtures...
 - Reduce interface cost
 - Reduce fixture build time
- Maintain fixture compatibility...
 - Support Dual Height “Stepped” Fixture Interface (created for historical compatibility with full fixture kit suite)
 - Support Flat Fixture interface (for large fixture interface)



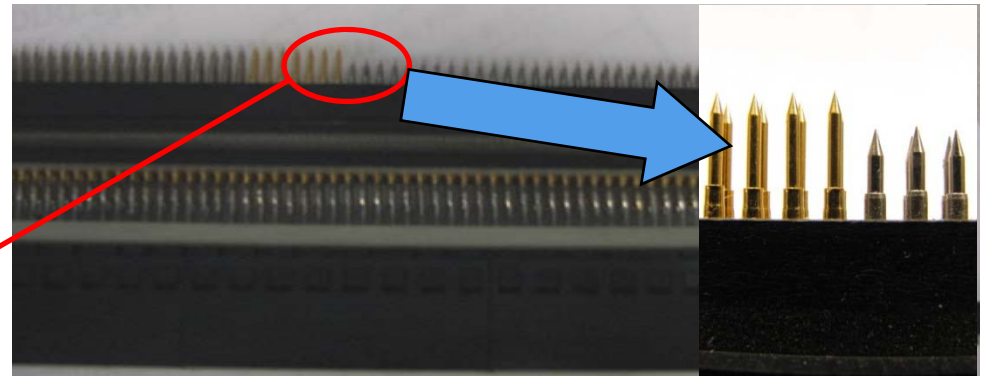
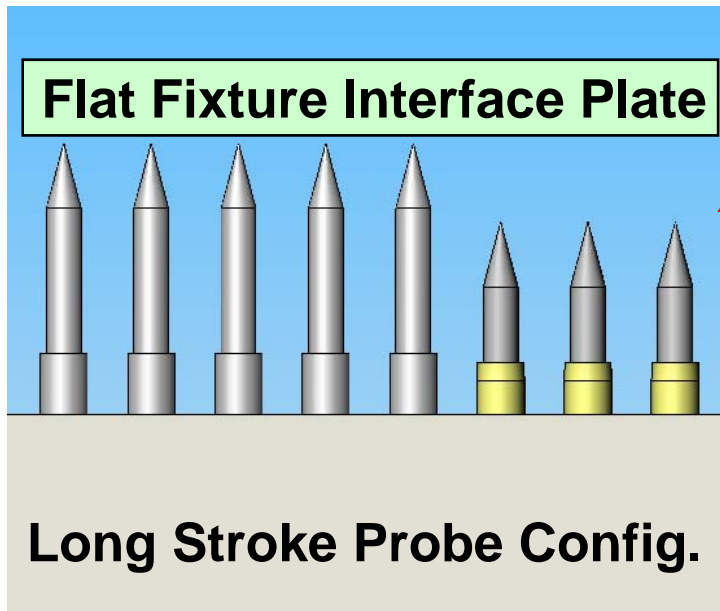
Section
View of
interface
board



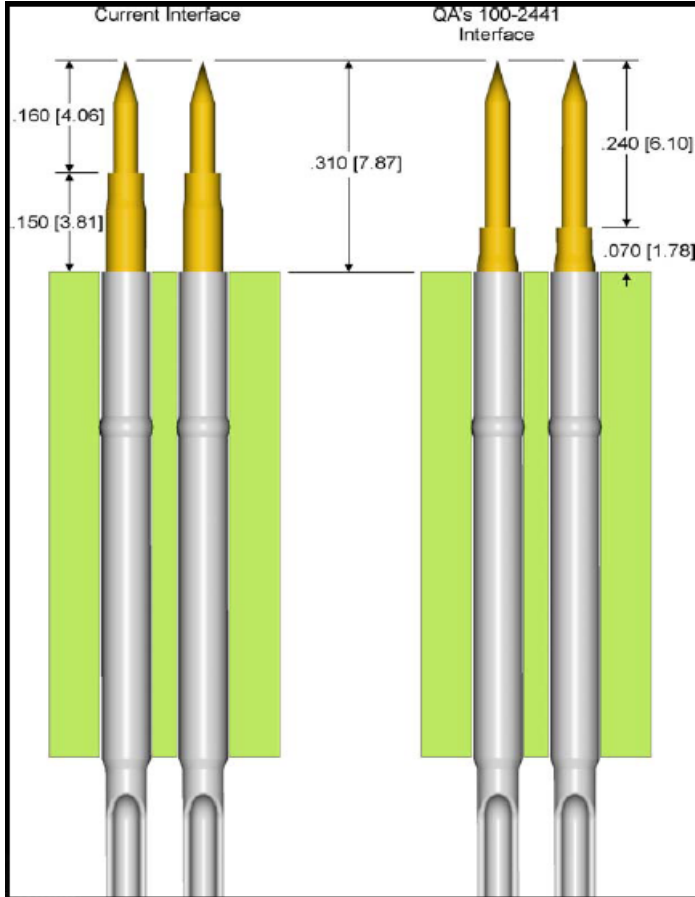
Dual Height
“Stepped”
Fixture
Interface

TestStation LH/LX – New Long Stroke Probe Interface

- Designed to Allow Flat Fixture Interface Plates or Traditional Fixtures on LH/LX test fixtures
 - Maintains Compatibility with ALL Existing Fixtures and Adapters
 - New long stroke probe available through QA Technologies



Economic Benefit of Long Stroke Probe

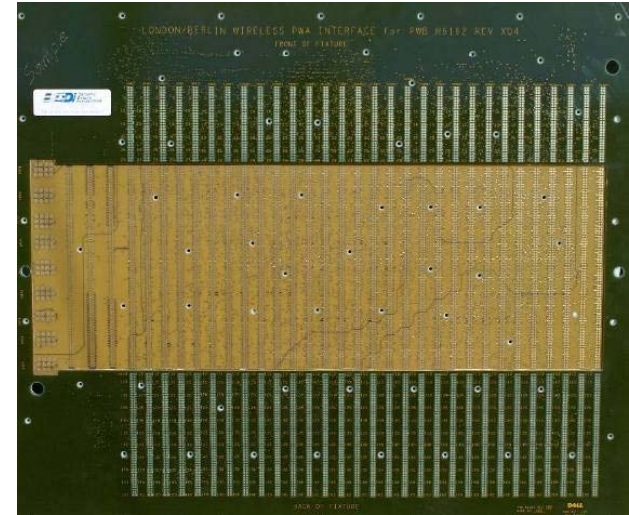


Stepped Interface

- 15-20 day turn time
- \$5913 cost
- Single supplier support

Flat Interface

- 5-10 day turn time
- \$1780 cost
- Multi supplier support



- 70% Cost reduction!
- 5 to 10 day faster turn
- Works with all fixture types
- First fixture pays for repinning

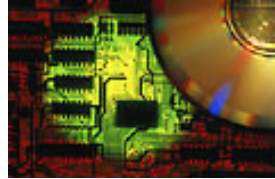
What Systems Can use the Long Stroke Probe?

- System Types which support the Long Stroke Probe include...
 - TestStation LH
 - TestStation LX
 - TS124LX
 - TS128L
 - GR2287LX
 - GR2286L

The Standard Interface (3840 Pin) Receiver does not require the Long Stroke Probe



TERADYNE



Questions

BECAUSE TESTING MATTERS