

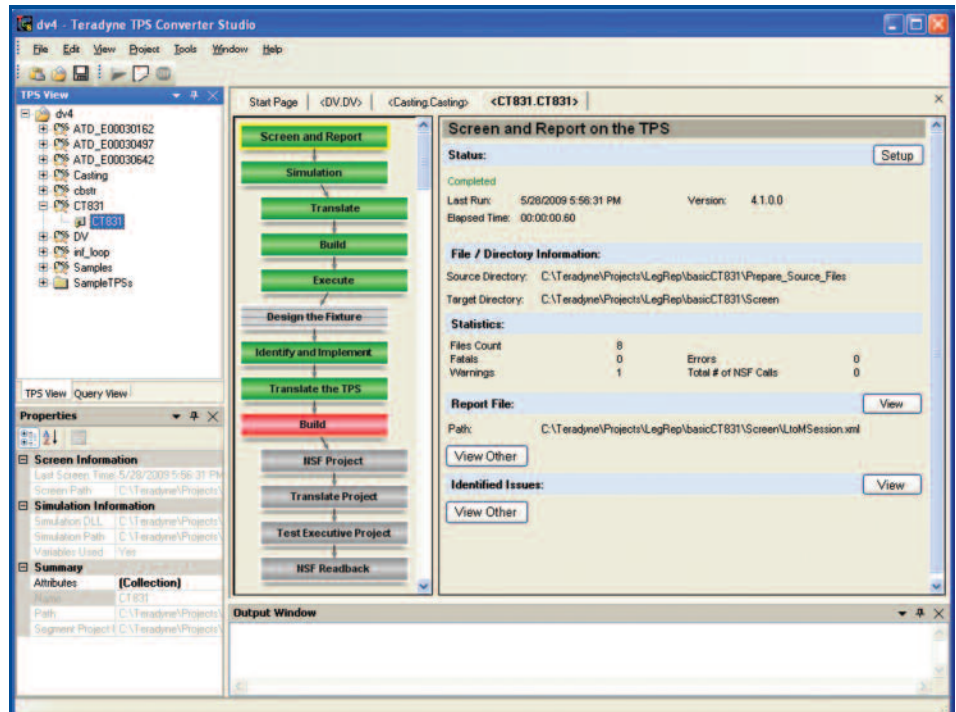


TPS Converter Studio™ Software

Test Program Rehost Solution for L-Series™ to Spectrum™ 9100, Di-Series and M9-Series™ Migration

KEY FEATURES

- **Completely converts L-Series digital tests and diagnostics to Di-Series and M9-Series Digital Test Instruments**
- **Automates standard L-Series analog to Spectrum 9100 support**
- **Process-oriented GUI organizes each conversion task**
- **Test program screener flags potential conversion problems with suggested resolutions**
- **Tightly integrated with Visual Studio and LabWindows/CVI**
- **Automatically builds a TestStudio project ready for Spectrum 9100 integration**
- **Automates the batch conversion of multiple TPSs**
- **New Analyzer feature performs detailed analysis and reporting of the digital capabilities employed across multiple TPSs**



TPS Converter Studio's process-oriented GUI guides you through each migration step, ensuring complete and accurate conversion.

TPS Converter Studio is Teradyne's test program conversion product for process oriented conversion of L-Series language to Teradyne digital instruments and Spectrum 9100 tests and diagnostics. TPS Converter Studio organizes the L-Series program-conversion task into sequential steps to ensure a smooth migration to your M9-Series based test environment. Each step features an intuitive, easy-to-use graphical user interface for setting up and selecting translation options and analyzing results.

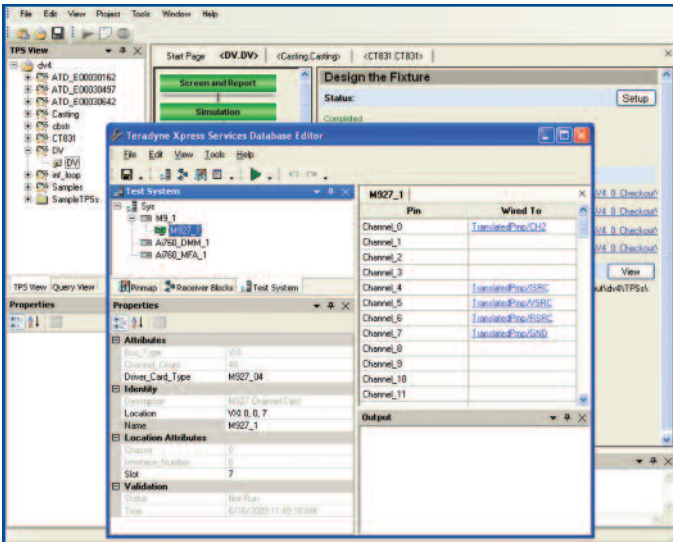
TPS Converter Studio offers you the choice of translating your legacy L-Series code to C/C++ DLL or EXE files, or digital test binary (DTB) format, complete with fault dictionary and/or guided probe diagnostics. These files are then automatically incorporated into a TestStudio™ test sequence as part of the TPS Converter Studio step-wise process, or they can be incorporated into the test executive of your choice. Either way, TPS Converter Studio is the ideal tool for simplifying and reducing your TPS rehost effort.

Detect Conversion Problems Upfront

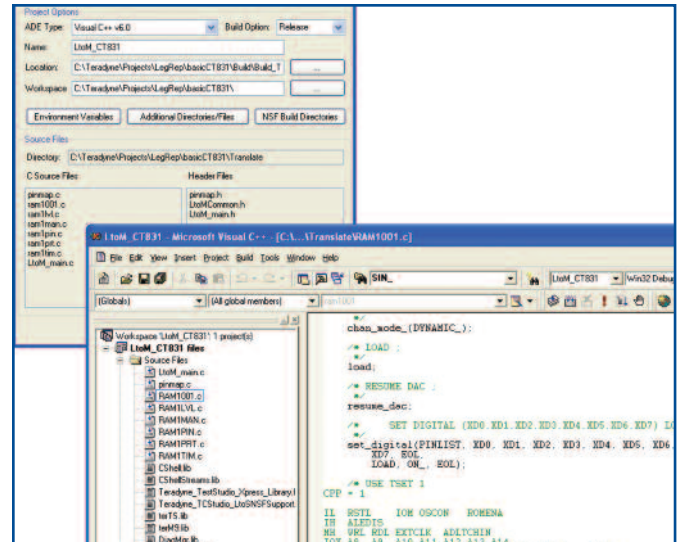
Starting with the source program file organization and screening step, TPS Converter Studio reviews your L-Series test program source files. The software flags any architectural or syntactic inconsistencies between the L-Series source files and the target environment that cannot be handled directly by the translator and makes recommendations for resolving them. Because the screener catches translation problems right upfront in the process, coding iterations due to problems detected during test program integration on the target test system (a major driver of TPS rehosting costs) are dramatically reduced or eliminated.

For each conversion problem identified, TPS Converter software summarizes the problem and provides a hyperlink to the underlying code. Click on the link, and you enter a viewer/editor that focuses right on the code segment in question.





Popular C-language programming applications are conveniently accessed directly from within TPS Converter Studio.



Knowledge of the Spectrum 9100 hardware configuration is integrated into the TPS conversion process, providing accurate resource matching and routing.

Integrated with C-Code Development Tools

When C-code implementation and compilation of the translated files is required, you can invoke either Visual Studio or LabWindows/CVI application environments right from TPS Converter Studio. This gives you the convenience of working with the coding tools that suit your comfort level. Following code compilation and debug, you can build a DLL or EXE file and save it in a local reuse library for later incorporation in your new test.

Automatically Builds a TestStudio Sequence

When using Teradyne's TestStudio on your test system, all high-level test procedures are represented as individual steps in the

TestStudio sequence. This makes it quick and easy to visualize the flow of your test program and augment it with additional operator interface features or diagnostic branching if desired. By using the TestStudio DLL add-in, test step parameters are easily specified and passed to the test routine. Measurement results are captured for test logging or use at other test steps.

Tight Integration with Test System Configuration Data

TPS Converter Studio takes advantage of the Spectrum 9100 Xpress™ Services system configuration databases in TestStudio. Access to these databases facilitates test program migration by providing the converter with all the physical and functional information about the target test system.

In the Design the Fixture step, for example, the test system instrumentation and ITA receiver wiring information for your Spectrum 9100 host is automatically accessed and, when presented with the UUT pinmap, can be validated to ensure logical routing from UUT pins to the appropriate signal source and measure instrumentation in the new test system.

TPS Converter Studio brings process and best-in-class tools together in a highly integrated environment to reduce the time and take the guesswork out of legacy L-Series based TPS migration. TPS Converter Studio runs on Windows 2000 and Windows XP.

Teradyne's Worldwide Service and Support

A dedicated, worldwide network of customer service and support professionals stands behind every Teradyne product. Teradyne offers an extensive network of regional support and training centers around the world. A full spectrum of services and software support programs also extend beyond the expiration of your original warranty. Visit our Web site at: <http://www.teradyne.com/atd>



Teradyne, Inc.
Assembly Test Division
600 Riverpark Dr.
North Reading, MA 01864
+1.978.370.2700

www.teradyne.com/atd

Teradyne and the Teradyne logo are trademarks of Teradyne, Inc. All other brand and product names are trademarks or registered trademarks of their respective owners. Information contained in this document is summary in nature and subject to change without notice.

© Teradyne 2009 · All rights reserved · Printed in U.S.A.

ATD-06-30-09