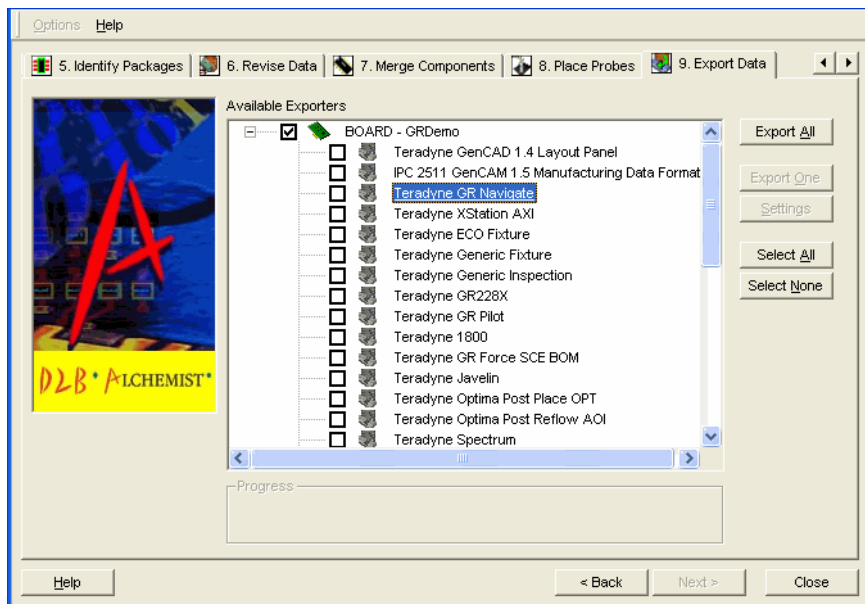


D2B Alchemist

Design-to-Build (D2B) - Increases Efficiency of Test and Inspection Program Preparation and CAD

KEY FEATURES

- *Single point solution for managing design data necessary for all popular test and inspection platforms*
- *Reduces test and inspection program development time with a single integrated environment*
- *Simplifies data preparation and data correction using software wizards*
- *Implements practical and customizable probe placement rules for maximizing use of test points and pads*
- *Automatically increases fixture accuracy and reliability by generating fixture wiring files*



Overview

In today's world of electronics manufacturing there is ever increasing pressure to shorten time-to-market, increase quality and reduce cost. Teradyne's D2B Alchemist software improves a company's ability to success in this increasingly competitive environment by accurately generating all of the information required to execute the increasingly complex manufacturing test, inspection and repair processes that are required by today's electronics manufacturers. D2B Alchemist software is the industry-leading test and inspection data preparation solution, capable of translating the most commonly used computer aided design (CAD) formats. The software imports PCB CAD, bill-of-material (BOM) information and part libraries, eliminating costly and error prone manual data manipulations. D2B Alchemist modifies the data according to user-specified rules and automatically assigns probe locations for in-circuit testers.

Teradyne's D2B Alchemist software is a powerful, manufacturing-wide platform for all test and inspection data preparation. Users will benefit from a significant increase in performance in CAD translation while reducing the time required to speed new products into manufacturing. The full function board and schematic viewer can display component, signal, test pin and property information. Intelligent label matching features enable simultaneous viewing of

selected information in both board and schematic views. These features provide test developers and repair operators the power to rapidly locate failing components.

D2B Alchemist software is flexible, providing support to both GenCAM and ODB++ formats. The probe placement solution analyzes the printed circuit board design for in-circuit test access and automatically assigns test probes to board nets. New features for test pin locations give users the ability to accept names and locations generated by the source CAD system. Feedback on additional probe requirements will be given to ensure complete coverage. Additionally, any component, pad or via can be marked as a non-probe location or as a forced test pin location, giving the user tremendous flexibility.

Teradyne's D2B Alchemist software is unique - a single mouse-click allows the user to generate programs for all test and inspection equipment on the production line. D2B alchemist is a multi-vendor solution and can generate tests and inspection program files for a variety of manufacturing equipment including Teradyne, Takaya, Seica, Agilent, MVP, JET, Testronics, TRI and IFR.

D2B Alchemist is a module of Teradyne's D2B suite of software solutions that enable electronic manufacturers to accelerate design into manufacturing, and out to market faster than any design-to-build software solution in the marketplace today.



Teradyne's Design-to-Build (D2B) modular framework